

Down a 4th, UP a 5th

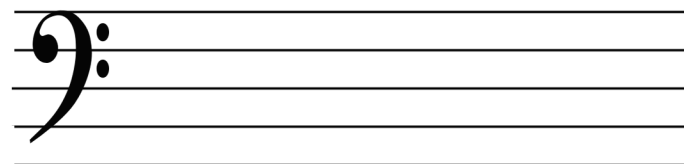
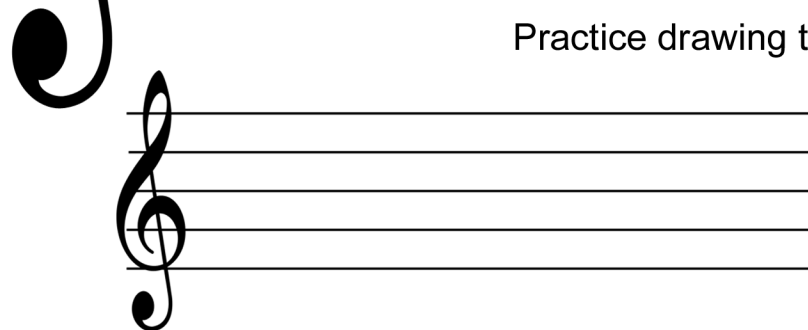
Starting on this line, count down a 4th.

Starting on this SPACE, count down a 4th.

Starting on this SPACE, count down a 4th.

The diagram shows a treble clef on the left. The staff has five lines and four spaces. Sharps (#) are placed on the following lines and spaces: Line 1, Space 1, Line 2, Space 2, Line 3, Space 3, Line 4, and Space 4. Blue numbers 1-4 indicate counting down from a sharp on a line to the next sharp on a space. Green numbers 1-5 indicate counting up from a sharp on a space to the next sharp on a line. A red note is placed on Line 4 with the text: "Oops, it's too high to go up, so count DOWN a 4th again." Below the staff, there are two more examples: "Starting on this SPACE, count up a 5th" (from Space 1 to Line 5) and "Starting on this SPACE, count up a 5th" (from Space 4 to Line 1).

Practice drawing the order of sharps below



F C G D A E B